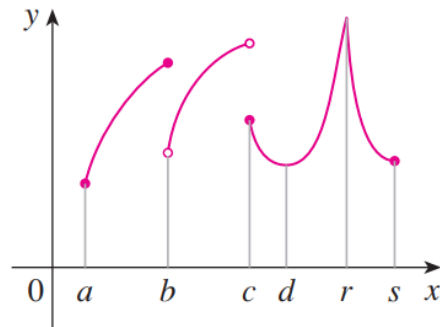


Exercise 4

For each of the numbers a , b , c , d , r , and s , state whether the function whose graph is shown has an absolute maximum or minimum, a local maximum or minimum, or neither a maximum nor a minimum.



Solution

The function has a local maximum at b and r . The function has a local minimum at d . The absolute minimum is at a , and the absolute maximum is at r . There's neither a maximum nor a minimum at c or s . a and s are not local minima because they're at the endpoints.